

The Haven



Lot 1419 #28 Dukes Lane, Strathfieldsaye



- 4
- 2.5
- 3
- 2

SALES CONSULTANTS:

Jesse Dorrington
0437 233 423
jesse@paulgraybuilders.com.au

Emily Gray
0427 007 063
emily@paulgraybuilders.com.au

Exterior Length: **32.11m**
Exterior Width: **12.80m**
Ceiling Height: **2.7m**

Living: **243.72m²** (26.23sq)
Entertaining: **22.25m²**
Garage: **62.60m²**
Porch: **2.60m²**
TOTAL: 331.17m² (35.65sq)

"With sleek roof lines and sharp edges, our new display home 'The Haven' is a modern masterpiece! An impressive 7-star energy rated home that, as the name suggests, serves as a safe and peaceful haven for the whole family."

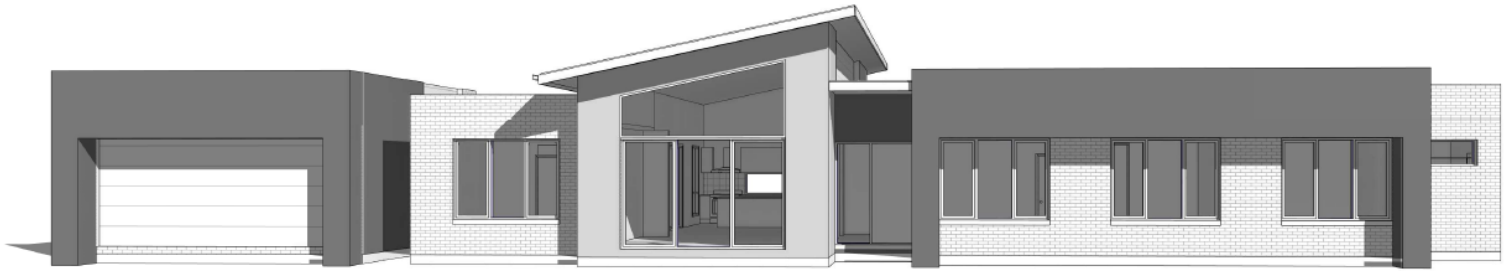
- Paul Gray

Lot Size: **643m²**



The Haven

STANDARDISED PLAN



Living: **243.74m²** (26.24sq)

Garage: **42.32m²**

Porch: **2.69m²**

TOTAL: **288.75m²** (31.08sq)

SALES CONSULTANTS:

Jesse Dorrington

0437 233 423

jesse@paulgraybuilders.com.au

Emily Gray

0427 007 063

emily@paulgraybuilders.com.au

Total Price: \$482,660

Exterior Length: **32.37m**

Exterior Width: **12.80m**

Ceiling Height: **2.7m**



This is a more standardised version of our Haven display home, keeping all the main stand-out features whilst stripping it back - a fantastic way to have the bones of this home, yet still customise it to suit your needs and tastes.

- Paul Gray



WWW.PAULGRAYBUILDERS.COM.AU



109 HIGH STREET,
BENDIGO VIC 3550



INFO@PAULGRAYBUILDERS.COM.AU



(03) 5444 5054